

जानकी देवी मेमोरियल कॉलेज

(दिल्ली विश्वविद्यालय)

JANKI DEVI MEMORIAL COLLEGE

(University Of Delhi)

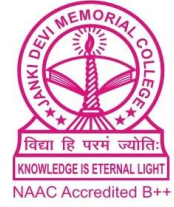
सर गंगा राम अस्पताल मार्ग, नई दिल्ली-११००६०

Sir Ganga Ram Hospital Marg, New Delhi-110060

दूरभाष : २५७८७७५४ फैक्स : २५७९०८३२

Tel. : 25787754, Fax : 25710832

E-mail : jdmcollege@hotmail.com, <http://jdm.du.ac.in>



Student Feedback Form 2021-2022

Swati Pal

प्राचार्या/Principal

जानकी देवी मेमोरियल महाविद्यालय

Janki Devi Memorial College

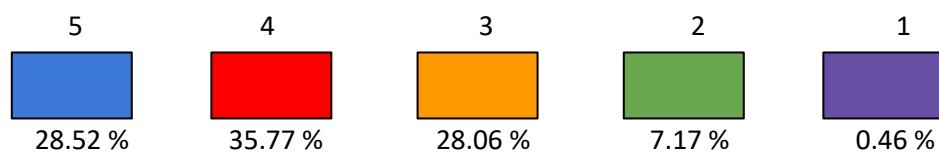
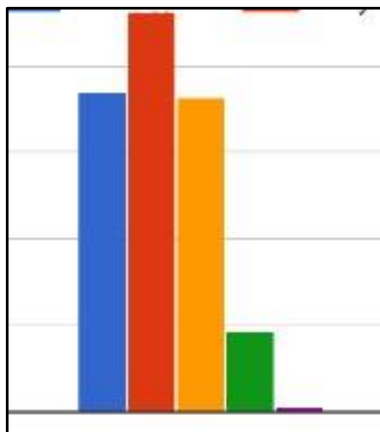
सर गंगा राम अस्पताल मार्ग, नई दिल्ली-११००६०

Sir Ganga Ram Hospital Marg, New Delhi-110060

JANKI DEVI MEMORIAL COLLEGE
Student Feedback Form 2021-2022

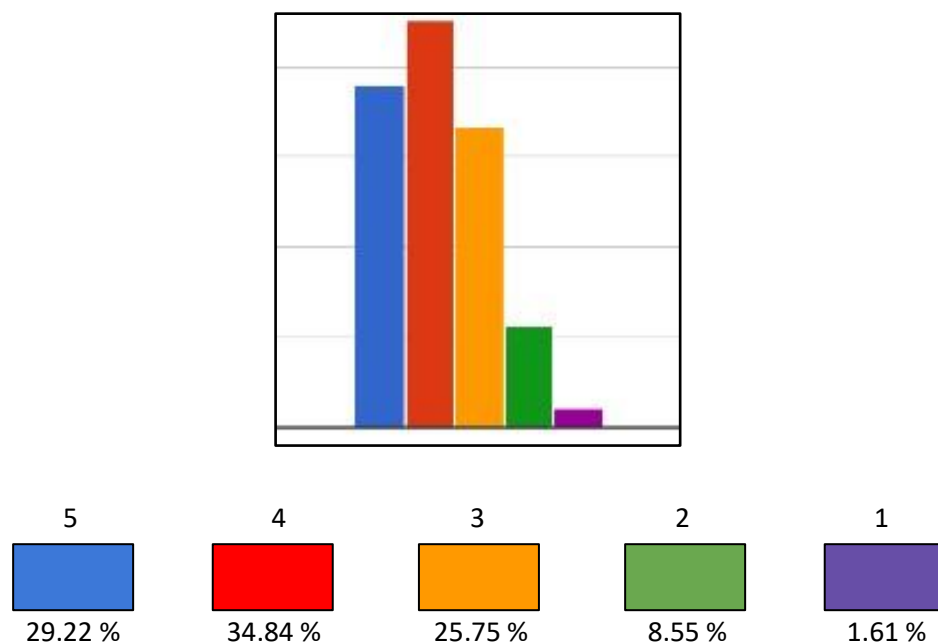
Section I – Feedback related to Curriculum

1. Program outcomes and course outcomes are well-defined and relevant.

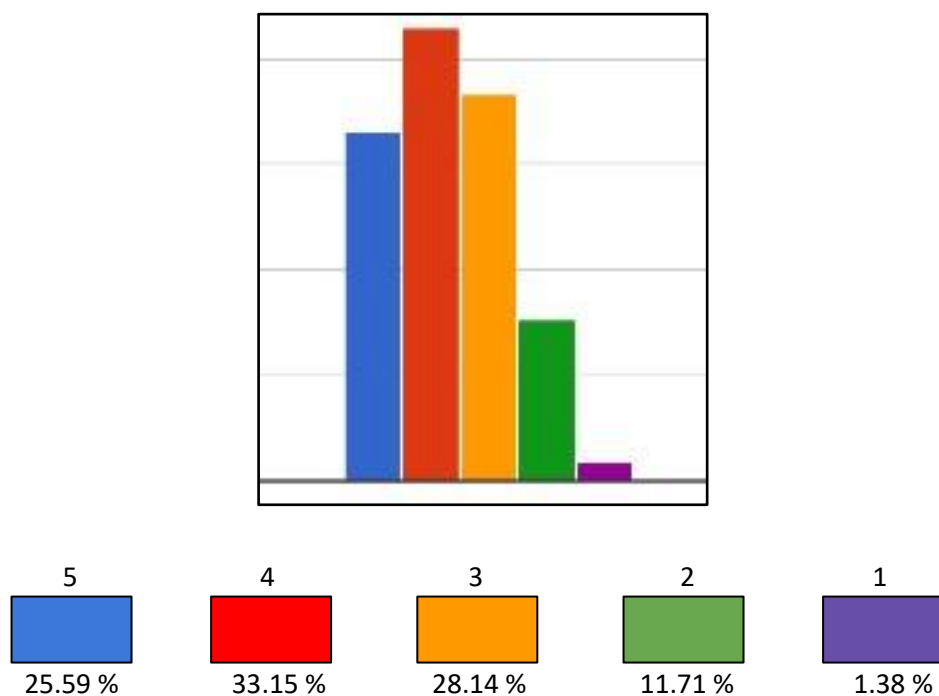



Principal
जानकी देवी स्मृतिस्मृत महाविद्यालय
Janki Devi Memorial College
सर गंगा राम हॉस्पिटल मार्ग नई दिल्ली-110060
Sir Ganga Ram Hospital Marg, New Delhi-110060

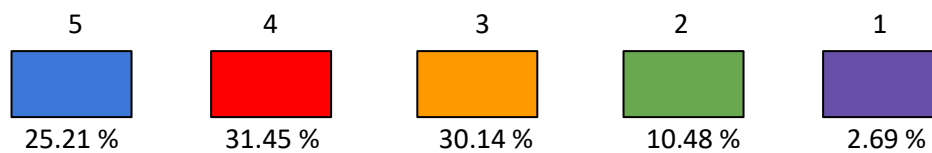
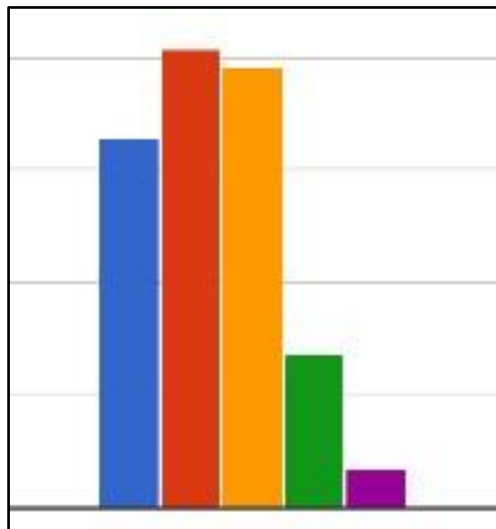
2. Syllabus of each course covers recent trends and developments.



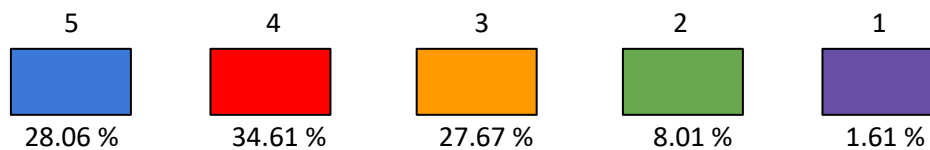
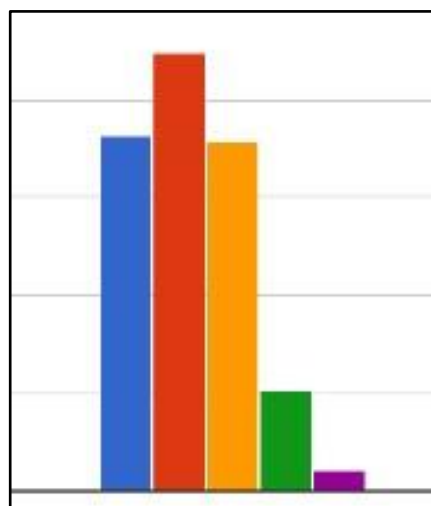
3. Curriculum has a balance of theory as well as application.



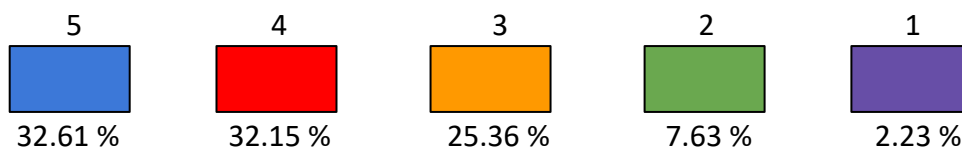
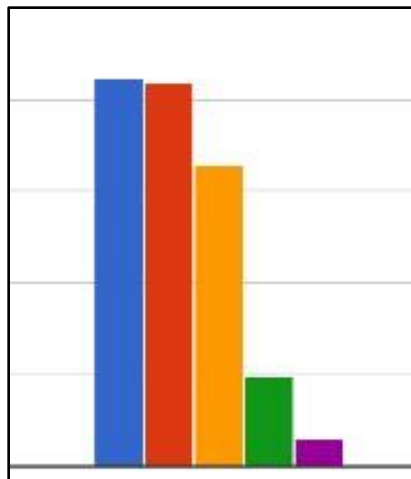
4. Curriculum has courses that give you hands-on/experiential learning.



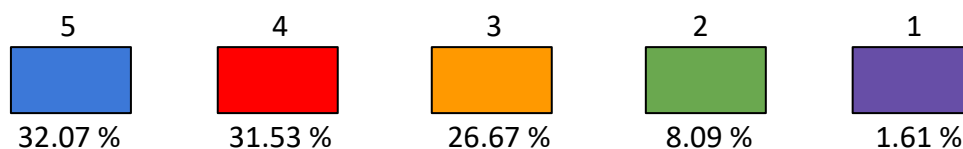
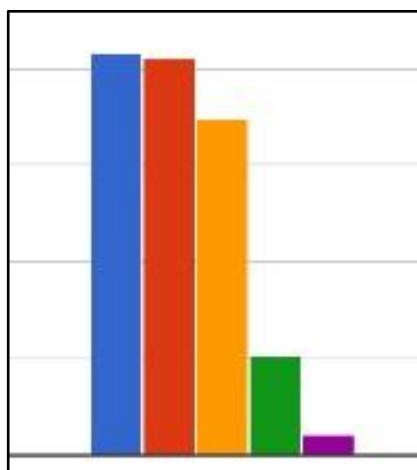
5. Curriculum is intellectually stimulating.



6. Curriculum promotes innovative and creative thinking.

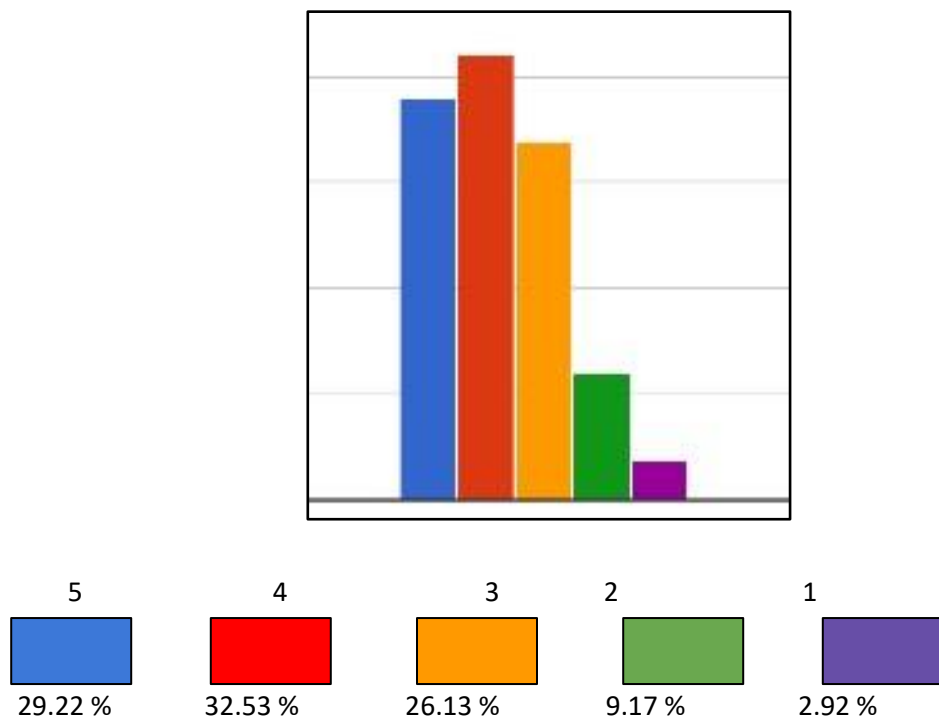


7. Curriculum is effective in developing analytical skills.

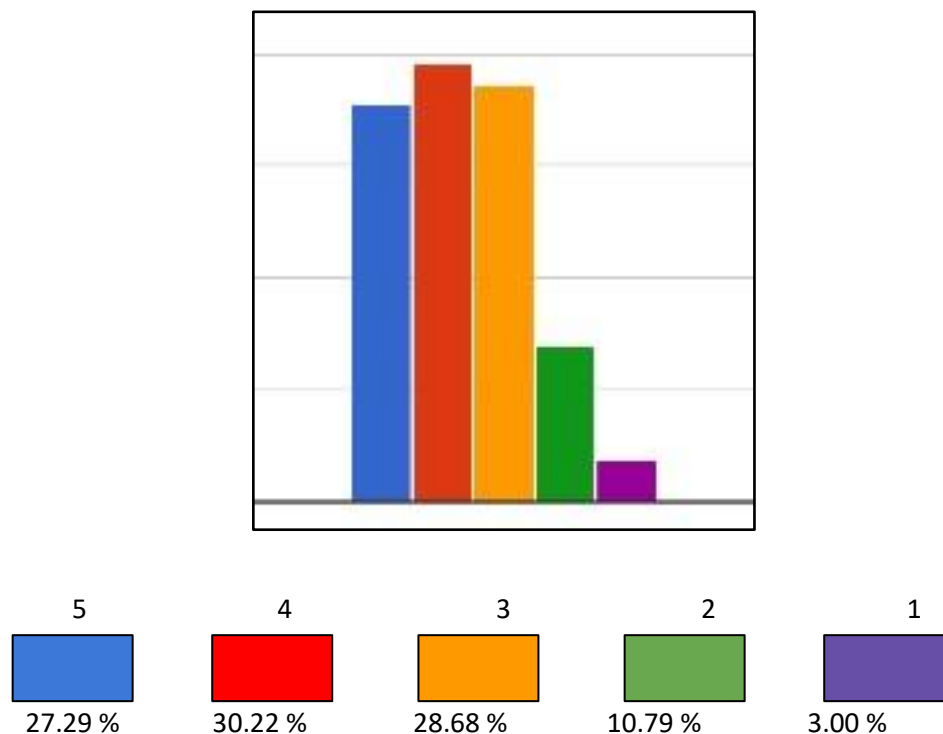


Omav Pal
 प्राचार्य/Principal
 जानकी देवी स्मॉरियल महाविद्यालय
 Janki Devi Memorial College
 सर गंगा राम हॉस्पिटल मार्ग नई दिल्ली-110060
 Sir Ganga Ram Hospital Marg, New Delhi-110060

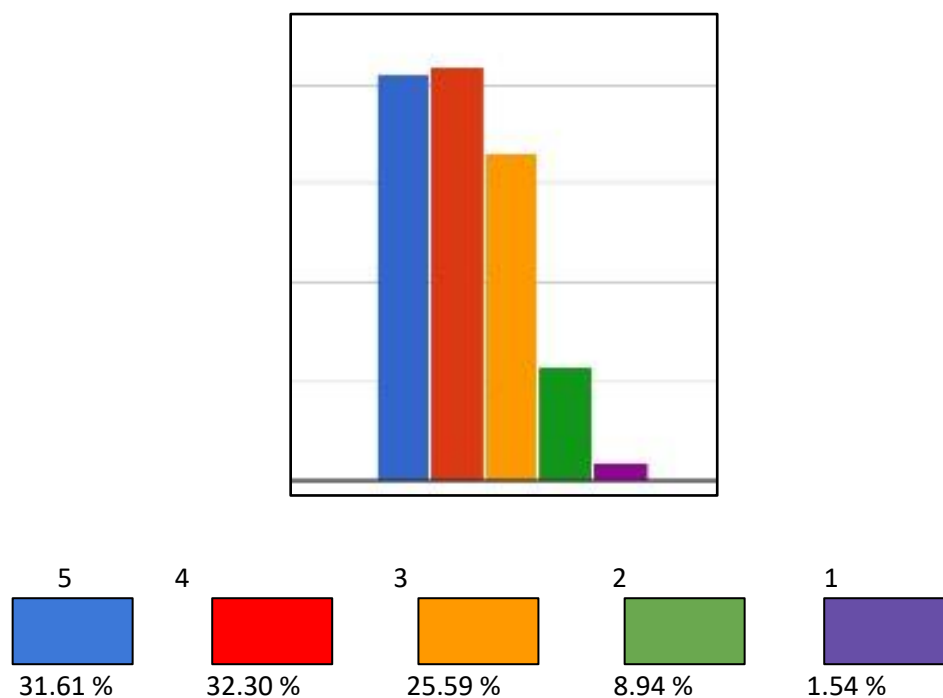
8. Curriculum promotes interest in research/entrepreneurship.



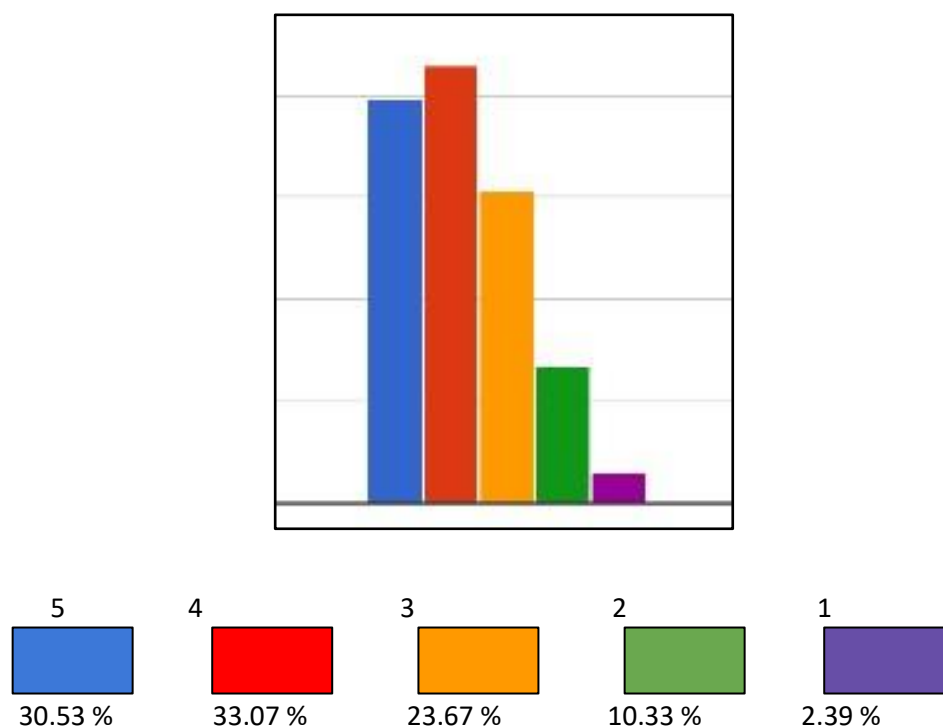
9. Curriculum enhances professional skills, prepares you for the industry and increases your employability.



10. Curriculum helps to fulfill your academic and career objectives.

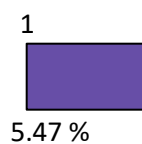
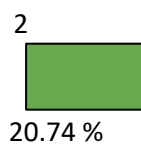
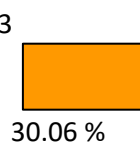
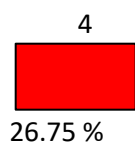
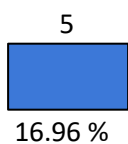
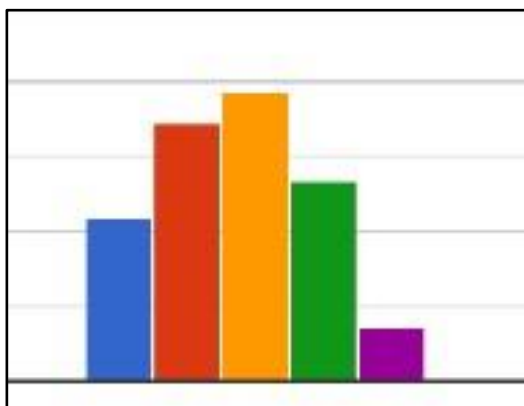


11. Curriculum you have studied/are studying has fulfilled your expectations.



Section II – Opportunities provided by the college

1. How satisfied you are with Career opportunities and Placement Cell of the college?

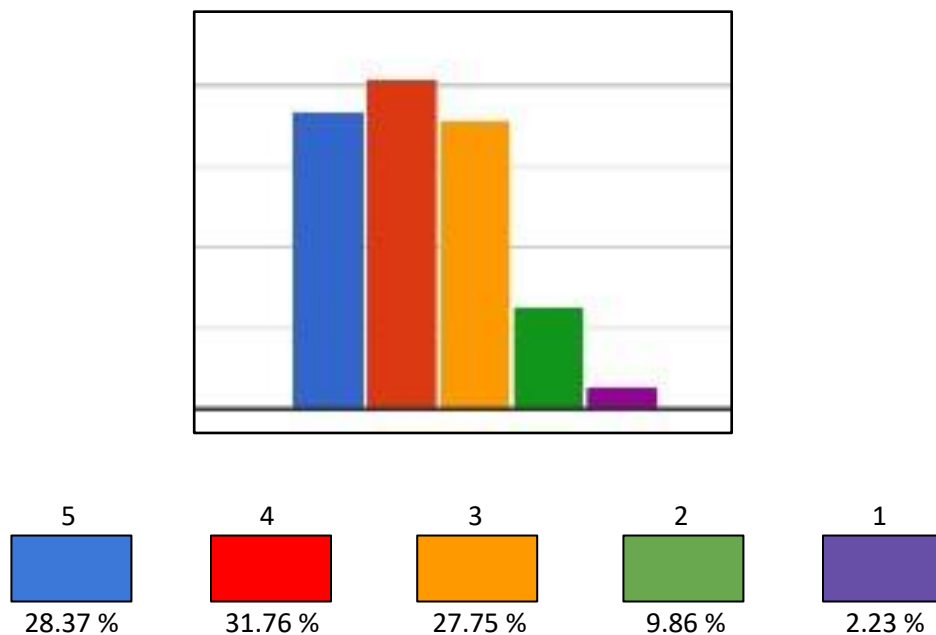


Shakti Pal

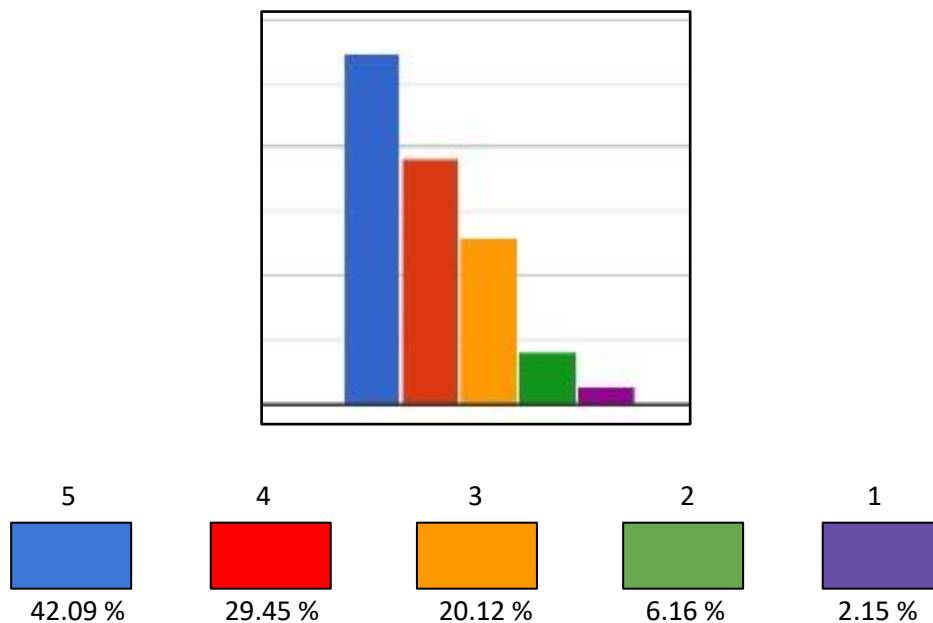
Principal

जानकी देवी स्मॉरियल महाविद्यालय
Janki Devi Memorial College
सर सरा राम हॉस्पिटल मार्ग नई दिल्ली-110060
Sir Ganga Ram Hospital Marg, New Delhi-110060

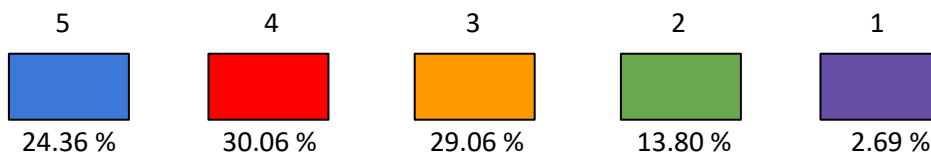
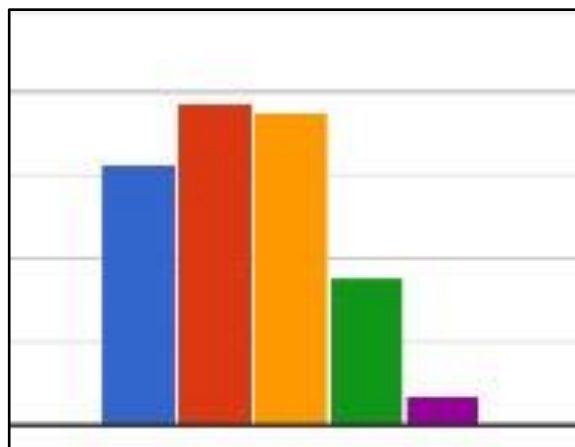
2. How satisfied you are with the range of activities/ events organized by the college?



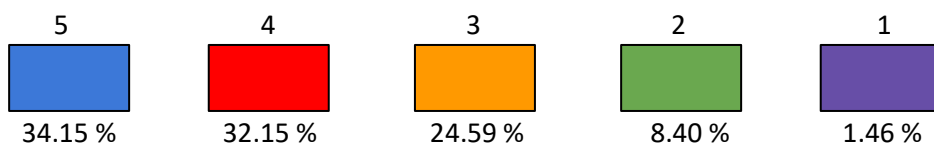
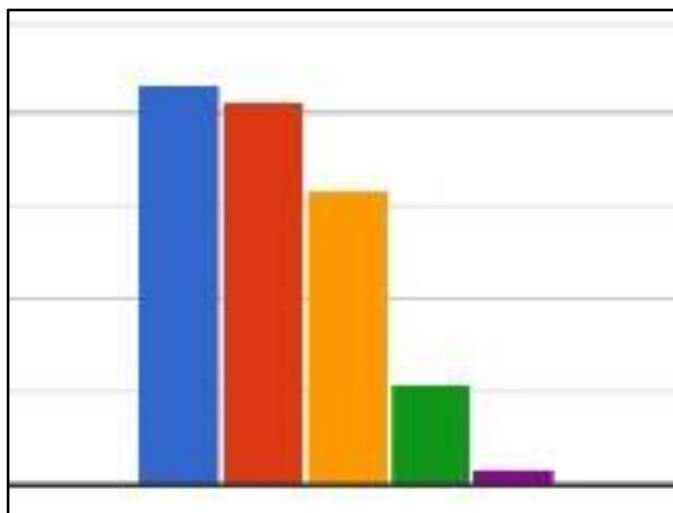
3. Do you regularly receive information about various webinars/ events/ Add-on courses being conducted by the college?



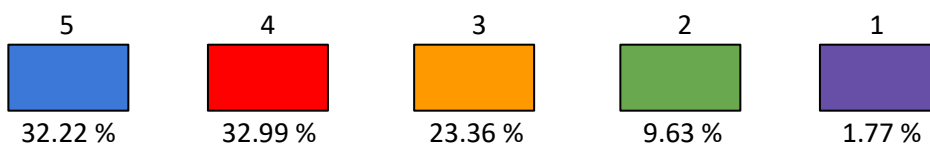
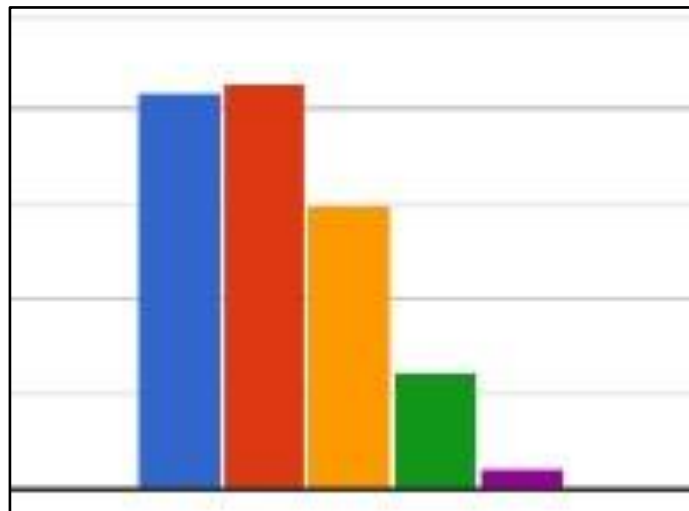
4. Do you actively participate in/ attend events conducted by the college?



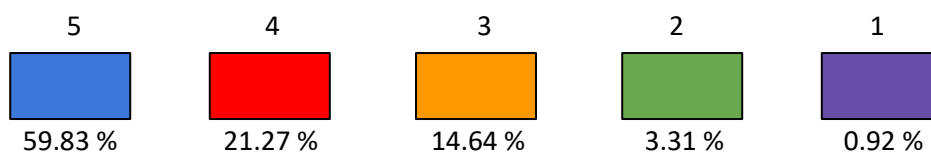
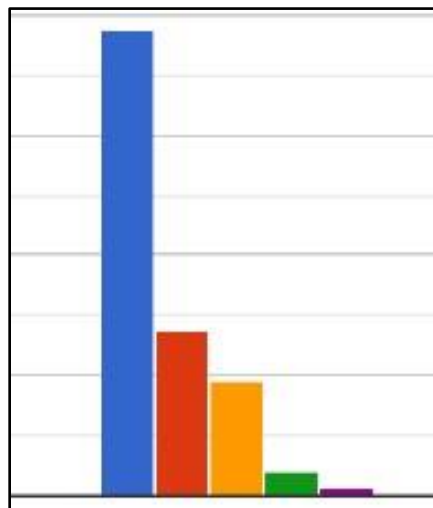
5. Please rate the college in terms of extension and outreach work done



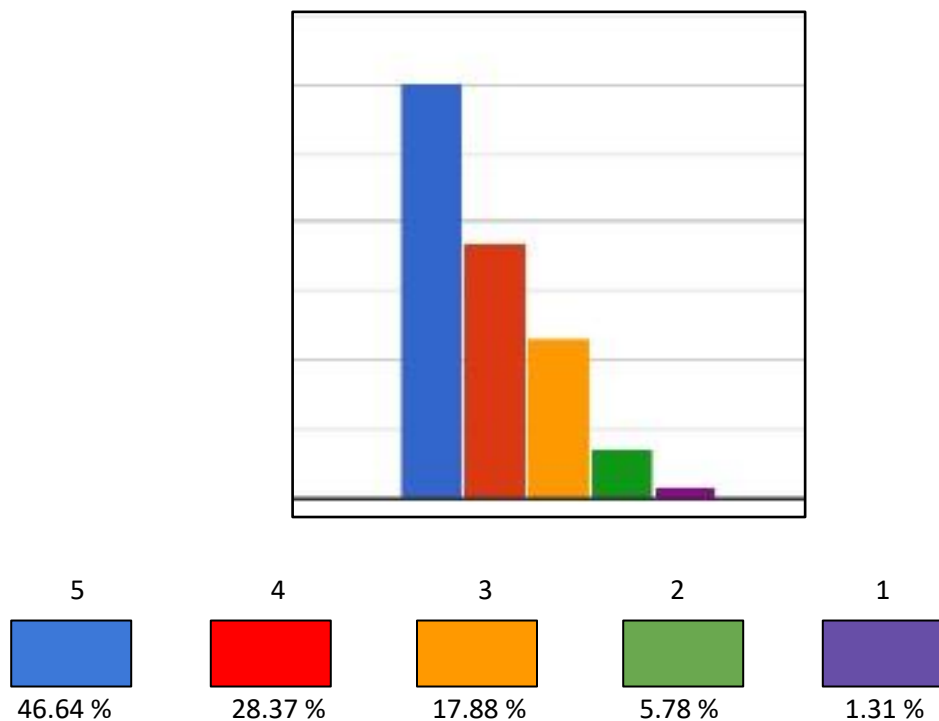
6. Please rate the college in terms of research opportunities for students



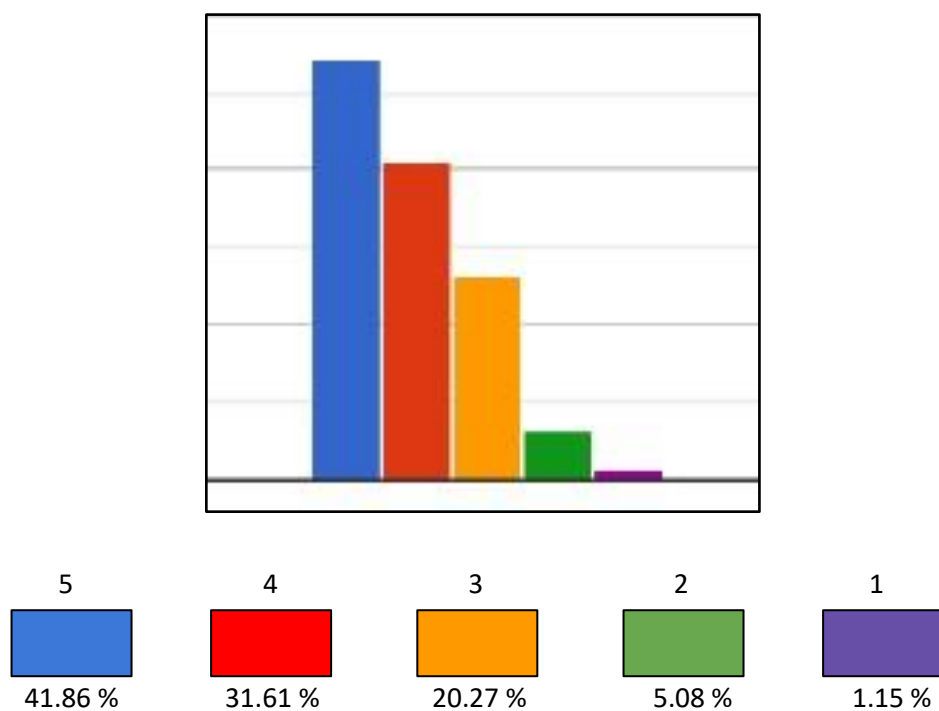
7. Please rate the college as environment-friendly institution



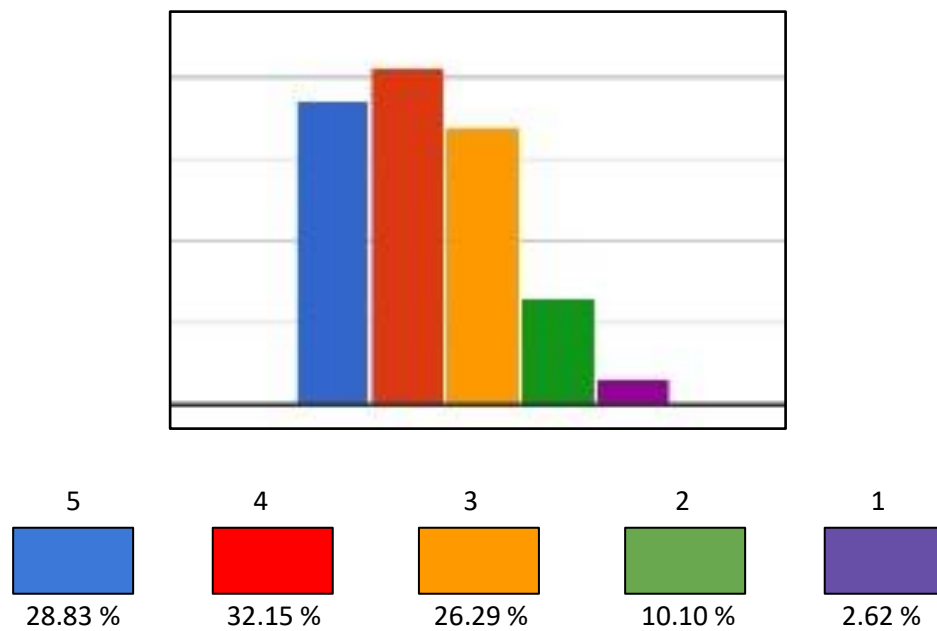
8. Please rate the college in terms of provide wide range of societies/clubs



9. Please rate the college in terms of providing an environment conducive to holistic development of students.



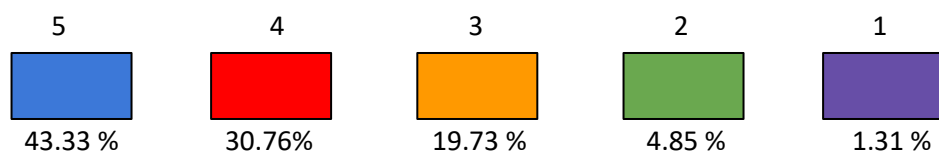
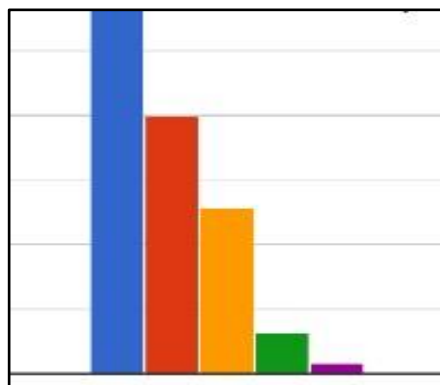
10. Please rate the college in terms of financial assistance provided by the college in the form of scholarships?



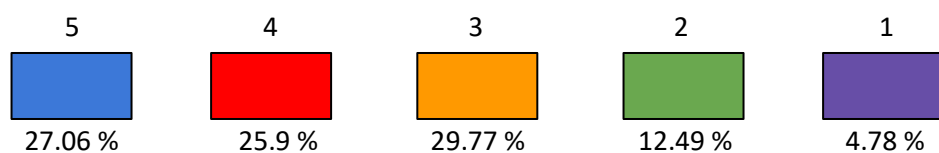
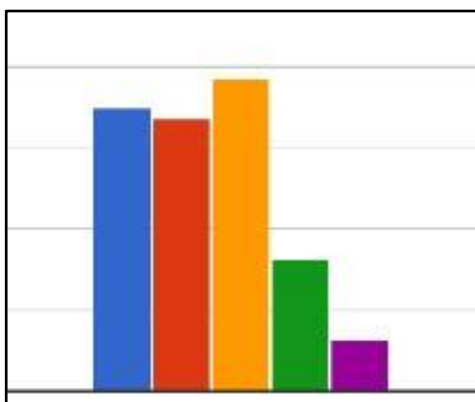

प्रचार्या/Principal
जानकी देवी मेमोरियल महाविद्यालय
Janki Devi Memorial College
सर गंगा राम हॉस्पिटल मार्ग नई दिल्ली-110060
Sir Ganga Ram Hospital Marg, New Delhi-110060

Section III – College Infrastructure

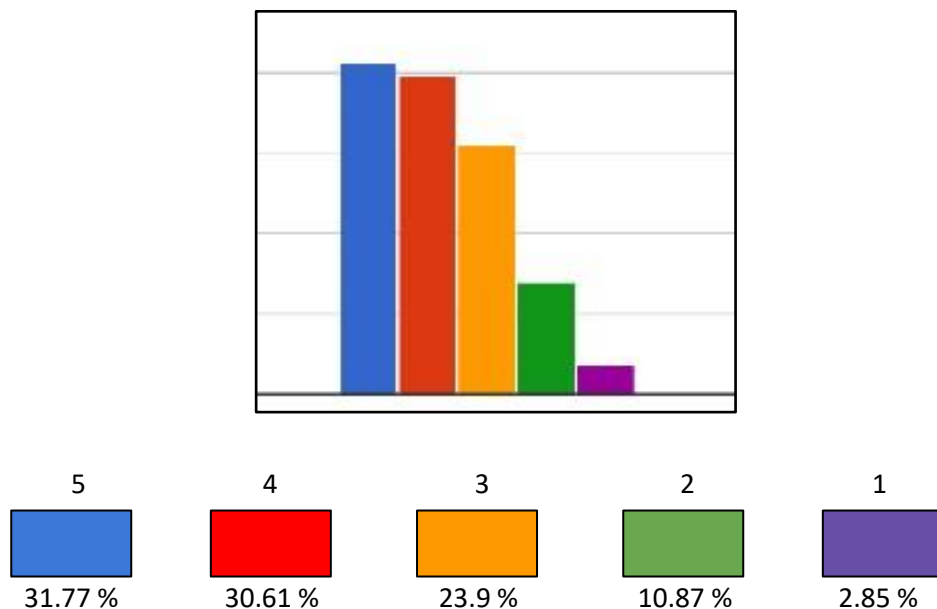
1. Platforms used for online teaching - Google Classroom and Google Meet.



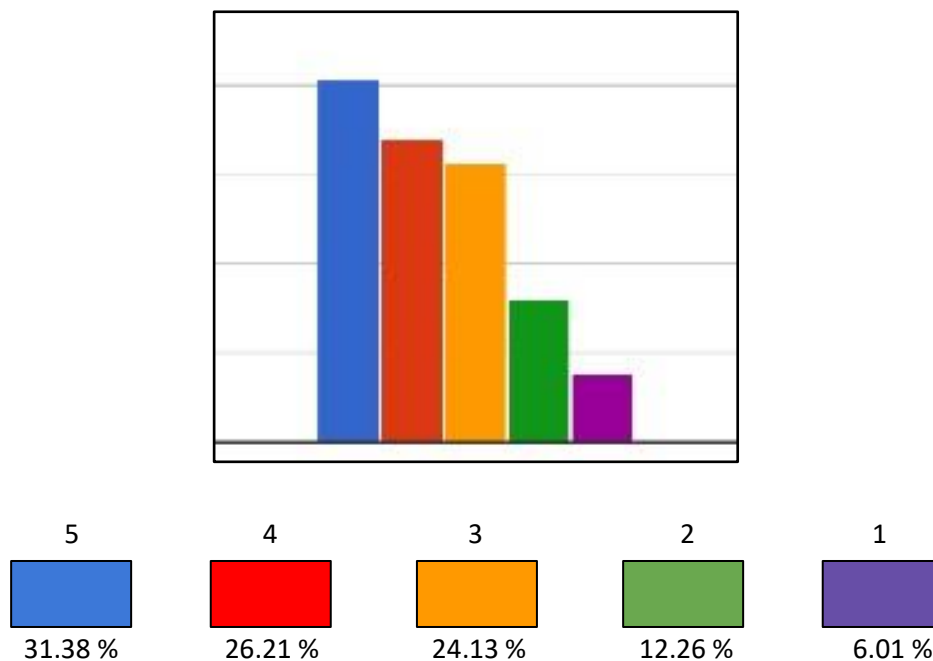
2. Your experience of online learning.



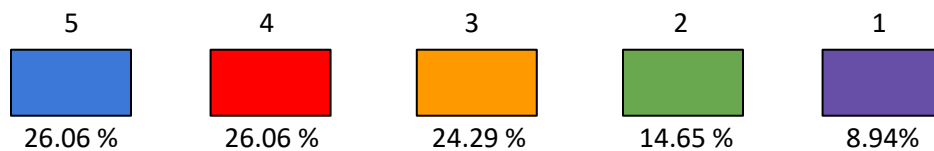
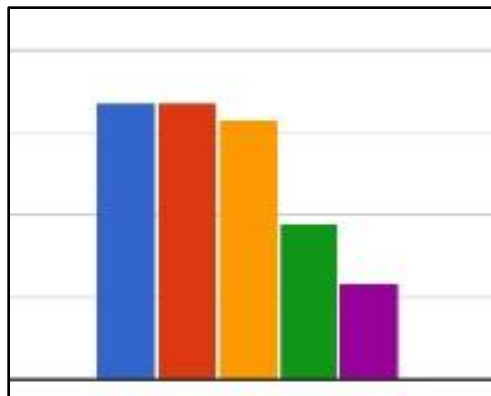
3. Classrooms and seating capacity are adequate.



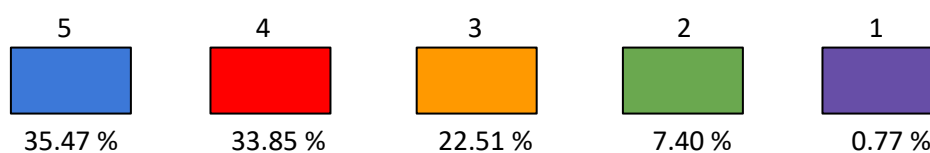
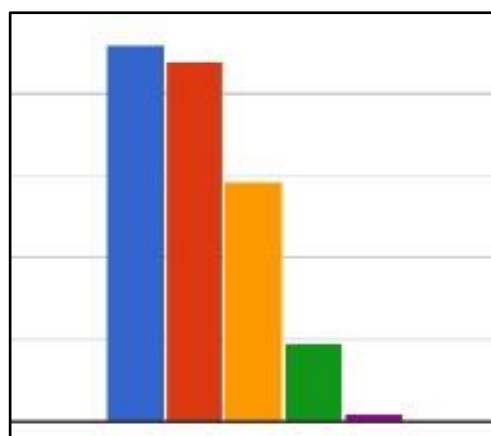
4. Clean drinking water is available on the campus.



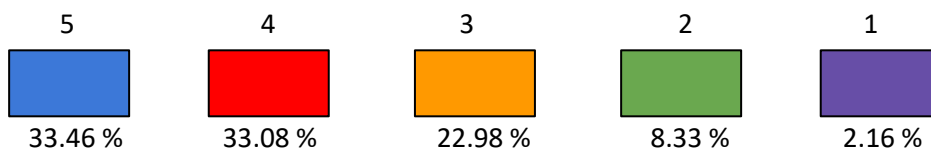
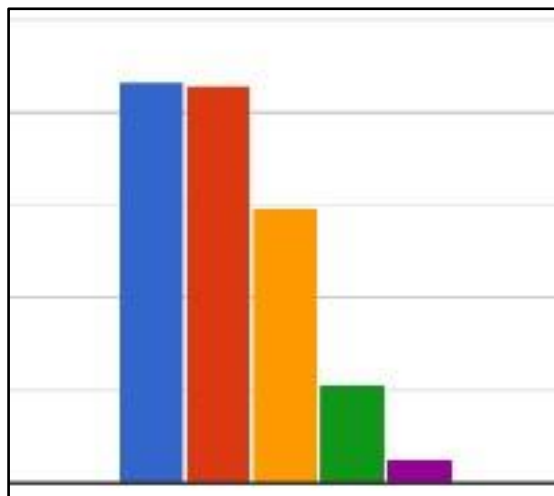
5. Washrooms in the campus are clean.



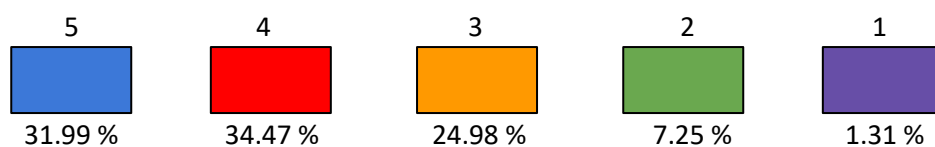
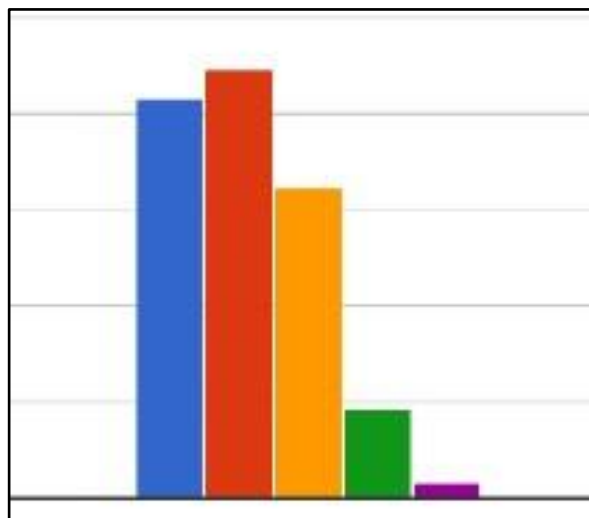
6. How would you rate the college website?



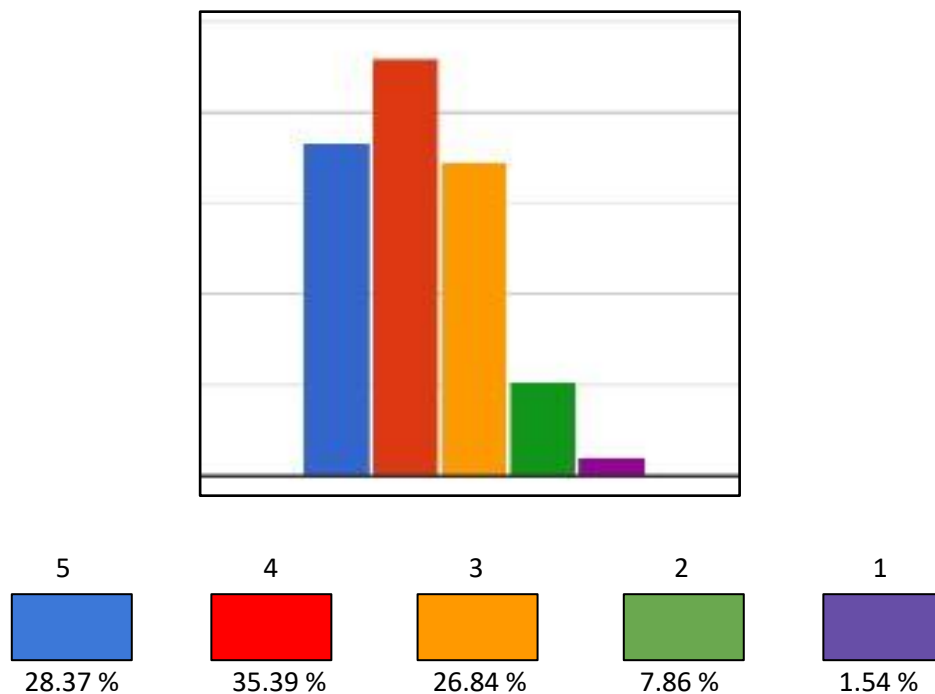
7. Please rate the administrative staff dealing with students.



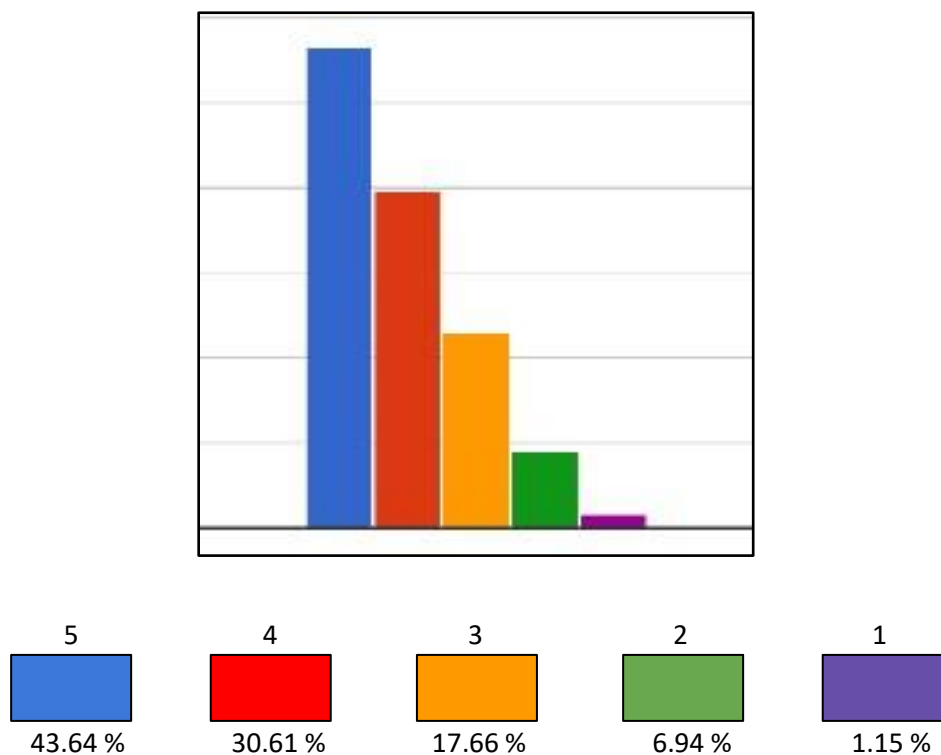
8. Please rate the functioning of Student-Faculty Committees.



9. Please rate the grievance redressal system of the college.



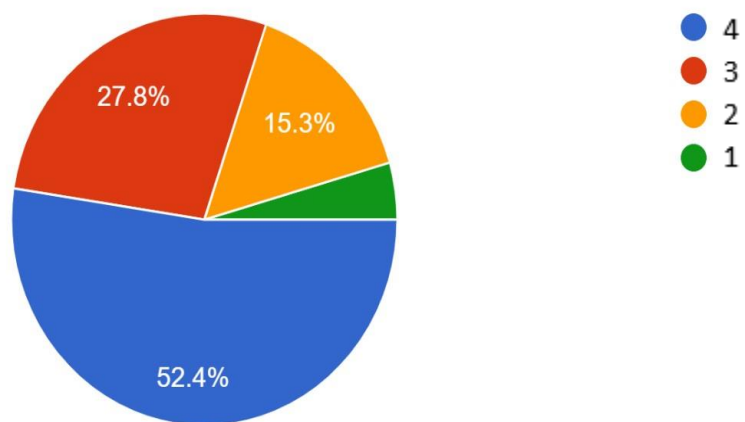
10. Please rate the college library in terms of Books, E-Resources, etc available.



Pie Charts

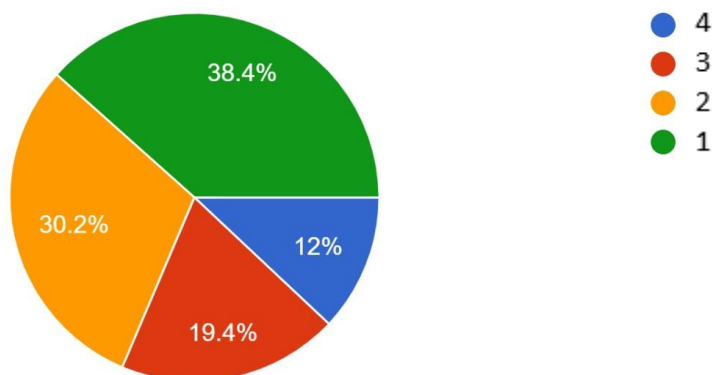
Please provide details of your attendance in the previous semester

1,297 responses

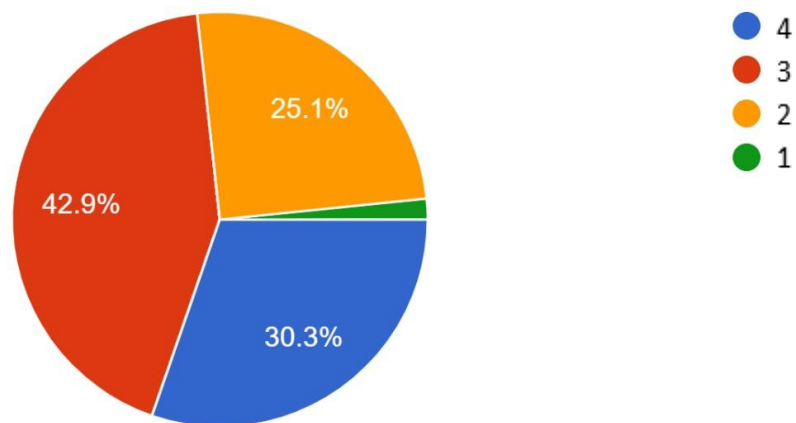


Your Participation in Societies

1,297 responses



Your overall experience in the college has been
1,297 responses



Shakti Pal
Principal

जानकी देवी स्मॉरियल महाविद्यालय
Janki Devi Memorial College
सर गंगा राम हॉस्पिटल मार्ग नई दिल्ली-110060
Sir Ganga Ram Hospital Marg, New Delhi-110060